

Designer: SMS
Checked by: MLT
Technician: SMS
Project Number: 149020

- NOTES:
1. BASE MAPPING SOURCE: CAD FILE TLH_TALLHASSEE.DWG FROM QUANTUM SPATIAL RECEIVED 3-17-2017.
 2. THE (NAVD83) VERTICAL CONTROL DATUM WAS USED FOR ALL ELEVATIONS.
 3. THE (NAVD83) COORDINATE SYSTEM WAS USED FOR ALL HORIZONTAL LATITUDE AND LONGITUDE COORDINATES.
 4. ALL OCS TYPES REFERENCE FEDERAL AVIATION REGULATIONS (FAR) PART 77 THAT SPECIFIES CLEARANCE REQUIREMENTS FOR ROADS, RAILROADS, AND WATERWAYS AS FOLLOWS: A) 17 FEET FOR AN INTERSTATE HIGHWAY, B) 25 FEET FOR ANY OTHER PUBLIC ROADWAY, C) 10 FEET OR THE HEIGHT OF THE HIGHEST MOBILE OBJECT THAT WOULD NORMALLY TRAVERSE THE ROAD, WHICHEVER IS GREATER, FOR A PRIVATE ROAD, D) 23 FEET FOR A RAILROAD, AND E) FOR A WATERWAY OR ANY OTHER TRAVERSE WAY NOT PREVIOUSLY MENTIONED, AN AMOUNT EQUAL TO THE HEIGHT OF THE HIGHEST MOBILE OBJECT THAT WOULD NORMALLY TRAVERSE IT.

- PLAN REFERENCED NOTES:
- A. AS DEPICTED, THE BUILDING RESTRICTION LINE (BRL) HAS BEEN ESTABLISHED TO REMAIN BEYOND AND CLEAR OF ALL RUNWAY PROTECTION ZONES (RPZS), OBSTACLE FREE ZONES (OFZS), OBJECT FREE AREAS (OFAs), NAVIAD CRITICAL AREAS, ATCT CLEAR LINE OF SIGHT (LOS), THE LOCATION OF THE BRL IS DEPENDENT UPON THE SELECTED ALLOWABLE STRUCTURE HEIGHT AS REQUIRED TO REMAIN BELOW EXISTING AND PLANNED FUTURE OVERLYING APPLICABLE CFR PART 77 CIVIL AIRPORT IMAGINARY SURFACES AND TERPS-PROTECTED IMAGINARY SURFACES.
 - B. EXISTING / FUTURE HOLDING POSITION MARKINGS ARE LOCATED 280' OR MORE FROM RUNWAY CENTERLINES.

FAA DISCLAIMER

THE CONTENTS DO NOT NECESSARILY REFLECT THE OFFICIAL VIEWS OR POLICIES OF THE FAA. THE ACCEPTANCE OF THIS PLAN BY THE FAA DOES NOT IN ANY WAY CONSTITUTE A COMMITMENT ON THE PART OF THE UNITED STATES TO PARTICIPATE IN ANY DEVELOPMENT DEPICTED HEREIN NOR DOES IT INDICATE THAT THE PROPOSED DEVELOPMENT IS ENVIRONMENTALLY ACCEPTABLE IN ACCORDANCE WITH PUBLIC LAWS.

CONSTRUCTION NOTICE REQUIREMENT

TO PROTECT OPERATIONAL SAFETY AND ULTIMATE DEVELOPMENT, ALL PROPOSED CONSTRUCTION ON THE AIRPORT MUST BE COORDINATED BY THE AIRPORT OWNER WITH THE FAA AIRPORTS DISTRICT OFFICE PRIOR TO CONSTRUCTION. PAFS REVIEW TAKES APPROXIMATELY 60 DAYS.



REVISIONS BY: AVCON, INC.

NO.	DESCRIPTION	DATE	BY
1	ADD PROPOSED QTA/CONRAC FACILITY	6/21/22	MAB
2	ADD PROPOSED IPPF FACILITY	6/21/22	MAB
3	NEW TERMINAL ACCESS ROADS	6/21/22	MAB
4	NEW AIRFIELD GEOMETRY	6/21/22	MAB
5	ADD PHASE 2 ACCESS ROADS	6/21/22	MAB
6	REVISE NORTH DEVELOPMENT AREA	12/09/22	MAB
7	REVISE PROPOSED/EXISTING BUILDING	1/9/23	MAB
8	REVISE CEMETERY EXPANSION AREA	1/9/23	MAB

Project Name: **AIRPORT MASTER PLAN UPDATE**

Drawing Name: **AIRPORT LAYOUT PLAN DRAWING**

FAA AIP # / STATE GRANT #
3-12-0077-039-2015 / 422301-49401

Division: **PLANNING**

Date: **JUNE 2019**
Drawing Number: **3**

LEGEND

DESCRIPTION	EXISTING	FUTURE
PROPERTY LINE	---	---
BUILDINGS	█	█
FULL-STRENGTH PAVEMENT	█	█
SHOULDERS	█	█
ROAD / PARKING	█	█
RUNWAY MARKINGS	█	█
STREAMS / WATER BODIES	█	N/A
RSA	█	█
ROFA	█	█
OPZ	█	█
BRL	█	█
TSR	█	SAME
BRL	█	SAME
NAVAIDS / LIGHTING	█	█
FENCE (10' HIGH)	█	█
AIRPORT BEACON	█	█
PAVEMENT REMOVAL	█	█
EASEMENT	█	█
BUILDING REMOVAL / RELOCATION	█	█
VEGETATION	█	█

FAA APPROVAL STAMP

EXISTING BUILDING TABLE

ID	DESCRIPTION	TOP EL.	ID	DESCRIPTION	TOP EL.
1	RTR	82.2	31	ELECTRICAL VAULT	61.7
2	FORMER ASR EQUIPMENT BUILDING	80.3	32	GSE MAINTENANCE	70.6
3	THANGARS (7 UNITS)	79.0	33	ARFF	61.2
4	THANGARS (7 UNITS)	78.2	34	GA TERMINAL	97.3
5	THANGARS (6 UNITS)	82.4	35	MILLON AIR	83.8
6	CORPORATE HANGAR	91.2	36	MILLON AIR	85.0
7	CORPORATE HANGAR	90.2	37	STATE OF FLORIDA HANGAR (FUTURE REMOVAL)	83.9
8	THANGARS (3 UNITS)	78.1	38	STATE OF FLORIDA FORESTRY SERVICE (FUTURE REMOVAL)	85.4
9	THANGARS (2 UNITS)	80.1	39	SHERIFFS HANGAR	81.4
10	THANGARS (5 UNITS)	81.8	40	LOW LEVEL WINDSHEAR ALERT SYSTEM TOWER	168.9
11	CORPORATE HANGAR	82.2	41	LMELY	73.4
12	THANGARS (8 UNITS)	79.5	42	LMELY	73.4
13	THANGARS (1 UNITS)	75.6	43	PARKING TOLL BOOTH	80.3
14	UNITED STATES FOREST SERVICE	96.7	44	TERMINAL BUILDING	115.9
15	THANGARS (20 UNITS)	79.2	45	COOLING TOWERS	73.9
16	THANGARS (8 UNITS) (FUTURE REMOVAL)	78.0	46	FEDEX	85.0
17	CORPORATE HANGAR (FUTURE REMOVAL)	90.2	47	AIR CARGO FACILITY	82.1
18	NORTH CARGO BUILDING (FUTURE REMOVAL)	83.2	48	AIRPORT MAINTENANCE COMPLEX	80.5
19	CELL PHONE TOWER	77.3	49	NATIONAL WEATHER SERVICE (FUTURE REMOVAL)	75.3
20	HERTZ FACILITY (FUTURE REMOVAL)	80.4	50	NATIONAL WEATHER SERVICE	71.0
21	NATIONAL FACILITY (FUTURE REMOVAL)	76.9	51	STORAGE BARN	74.3
22	AVS FACILITY (FUTURE REMOVAL)	79.4	52	FAA FACILITY MALSR POWER CONTROL SHACK	64.1
23	CORPORATE HANGAR	101.9	53	FAA ATCT COMPLEX	104.7
24	COMPASS POINT	86.0	54	AIRPORT SURVEILLANCE RADAR	86.3
25	FLIGHTLINE	89.2	55	FAA FACILITY ALSF-2 POWER SUPPLY	66.7
26	SEWER PUMPING STATION	54.1	56	STORAGE BUILDING (FUTURE REMOVAL)	70.2
27	CIVIL AIR PATROL (FUTURE REMOVAL)	61.4			
28	FUEL FARM	67.2			
29	FLIGHTLINE	90.4			
30	FLIGHTLINE (FUTURE REMOVAL)	74.8			

FUTURE BUILDING TABLE

ID	DESCRIPTION	TOP EL. (MSL)	ID	DESCRIPTION	TOP EL. (MSL)
A	8 UNIT THANGARS (2)	88.4	O	CARGO FACILITIES 120'X260'	94.0
B	HANGAR 62'X65' (4)	88.4	P	CARGO FACILITIES 120'X260'	81.0
C	HANGAR 62'X65'	92.5	Q	CARGO FACILITIES 120'X260'	76.0
D	HANGAR 62'X65'	92.5	R	HANGARS 75'X120' (2)	98.8
E	HANGAR 62'X65'	92.5	S	HANGARS 75'X160' (2)	102.0
F	HANGAR 62'X65'	92.5	T	MIS 17'X100' (2)	100.0
G	EQUIPMENT SHELTER	74.0	U	HANGARS 80'X120' (8)	93.0
H	HANGAR 120'X120'	98.0	V	HANGAR 105'X115'	101.0
I	HANGAR 120'X120'	99.0	W	HANGAR 95'X105'	101.0
J	HANGAR 120'X120'	100.0	X	FBO 50'X110'	96.0
K	HANGAR 60'X100'	74.0	Y	HANGAR/MARIT ADMIN. 120'X180'	90.0
L	HANGAR 60'X100'	78.0	Z	STORAGE 50'X55'	80.0
M	REPLACEMENT BULK HANGAR 140'X366'	89.0	AA	FUEL FARM	N/A
N	MULTI-AGENCY FACILITY 170'X272'	100.0			

RUNWAY 9 END TRAVERSE WAY TABLE

ID	DESCRIPTION	OBJECT TOP ELEVATION (MSL)	ALLOWABLE SURFACE ELEVATION (MSL)	PENETRATION	DISPOSITION
T1	PRIVATE ROAD	55.2	96.0	-41.4'	TBD
T2	PRIVATE ROAD	63.4	95.0	-32.1'	TBD
T3	PRIVATE ROAD	66.9	95.0	-28.9'	TBD
T4	PRIVATE ROAD	62.7	60.6	2.1'	REQUIRE ATCT CLEARANCE TO TRAVERSE RUNWAY CENTERLINE APPROACH

RUNWAY 27 END TRAVERSE WAY TABLE

ID	DESCRIPTION	OBJECT TOP ELEVATION (MSL)	ALLOWABLE SURFACE ELEVATION (MSL)	PENETRATION	DISPOSITION
T5	PRIVATE ROAD	71.1	99.9	-28.2'	NONE
T6	PUBLIC ROAD	81.3	101.9	-20.2'	NONE
T7	PUBLIC ROAD	78.8	106.7	-27.9'	NONE
T8	PRIVATE ROAD	59.1	67.8	-8.7'	NONE
T9	PRIVATE ROAD	70.1	82.4	-12.4'	NONE
T10	PUBLIC ROAD	78.2	84.2	-6.3'	NONE
T11	PUBLIC ROAD	76.6	122.4	-45.8'	NONE
T12	PRIVATE ROAD	50.0	67.2	-17.1'	NONE
T13	PUBLIC ROAD	52.5	66.6	-14.1'	NONE
T14	PRIVATE ROAD	53.1	76.6	-23.9'	NONE

RUNWAY 18 END TRAVERSE WAY TABLE

ID	DESCRIPTION	OBJECT TOP ELEVATION (MSL)	ALLOWABLE SURFACE ELEVATION (MSL)	PENETRATION	DISPOSITION
T15	PRIVATE ROAD	74.2	111.5	-37.2'	NONE
T16	PRIVATE ROAD	73.9	111.1	-37.8'	NONE
T17	PRIVATE ROAD	81.9	111.4	-29.9'	NONE

FAA APPROVAL BLOCK

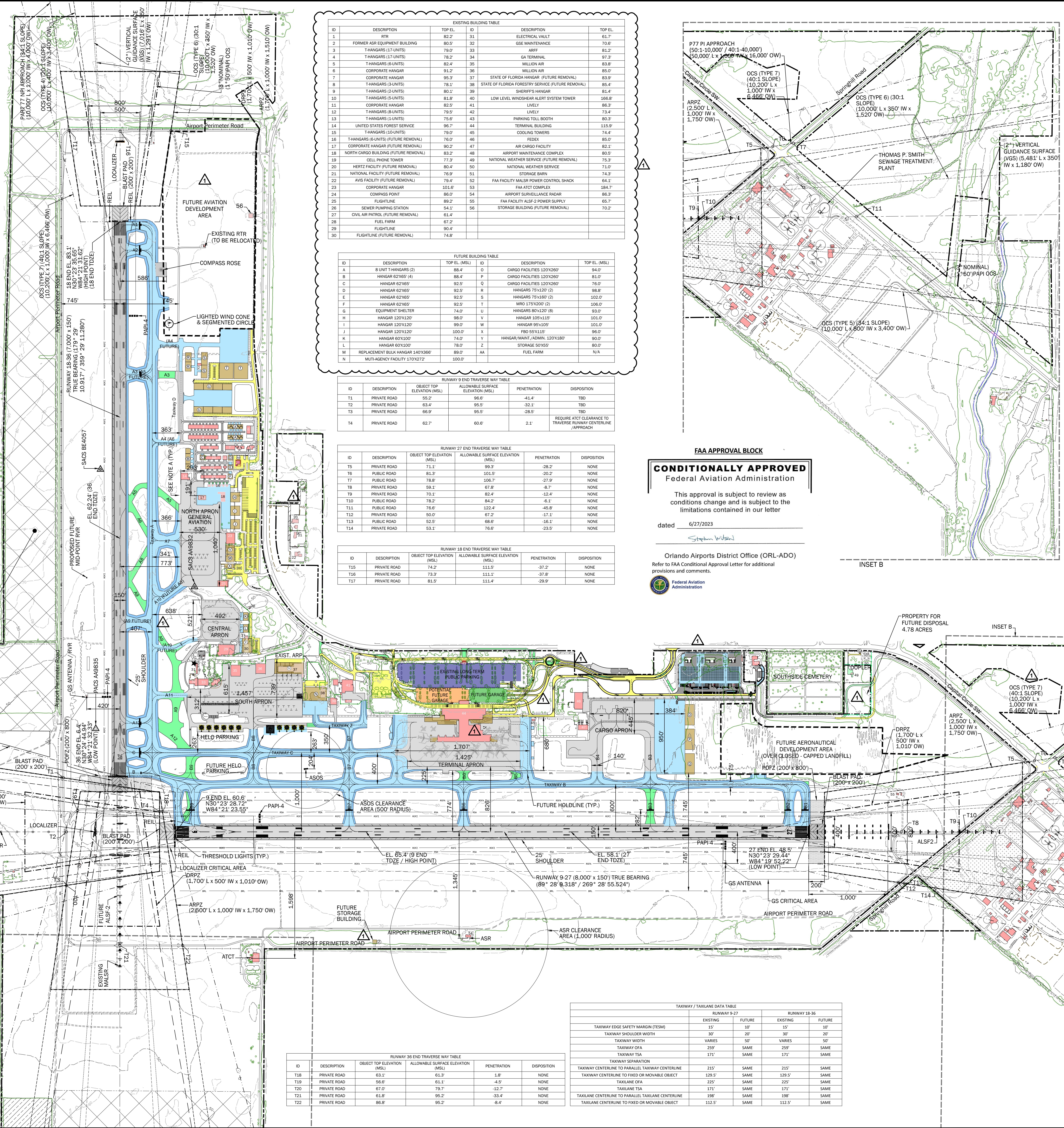
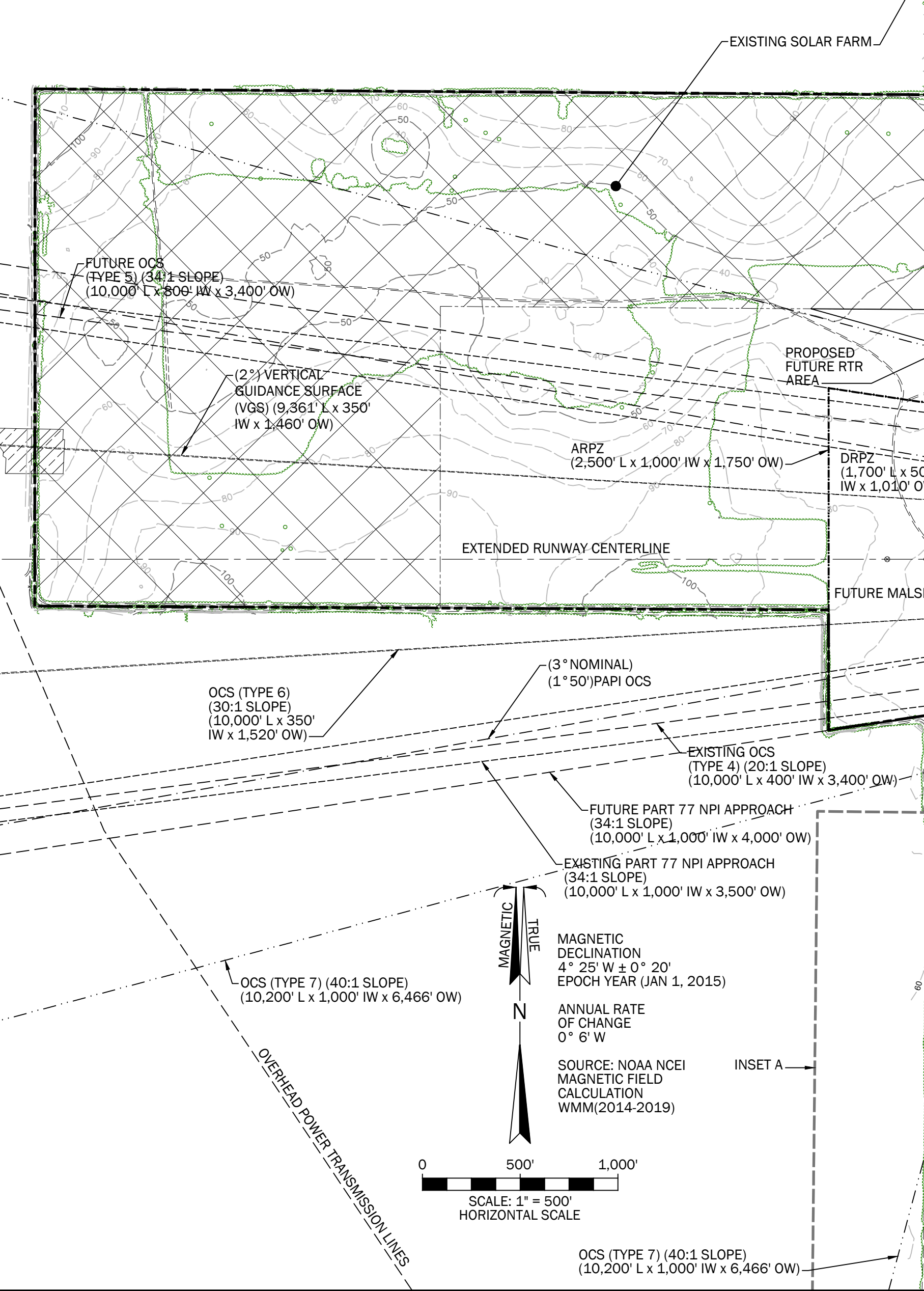
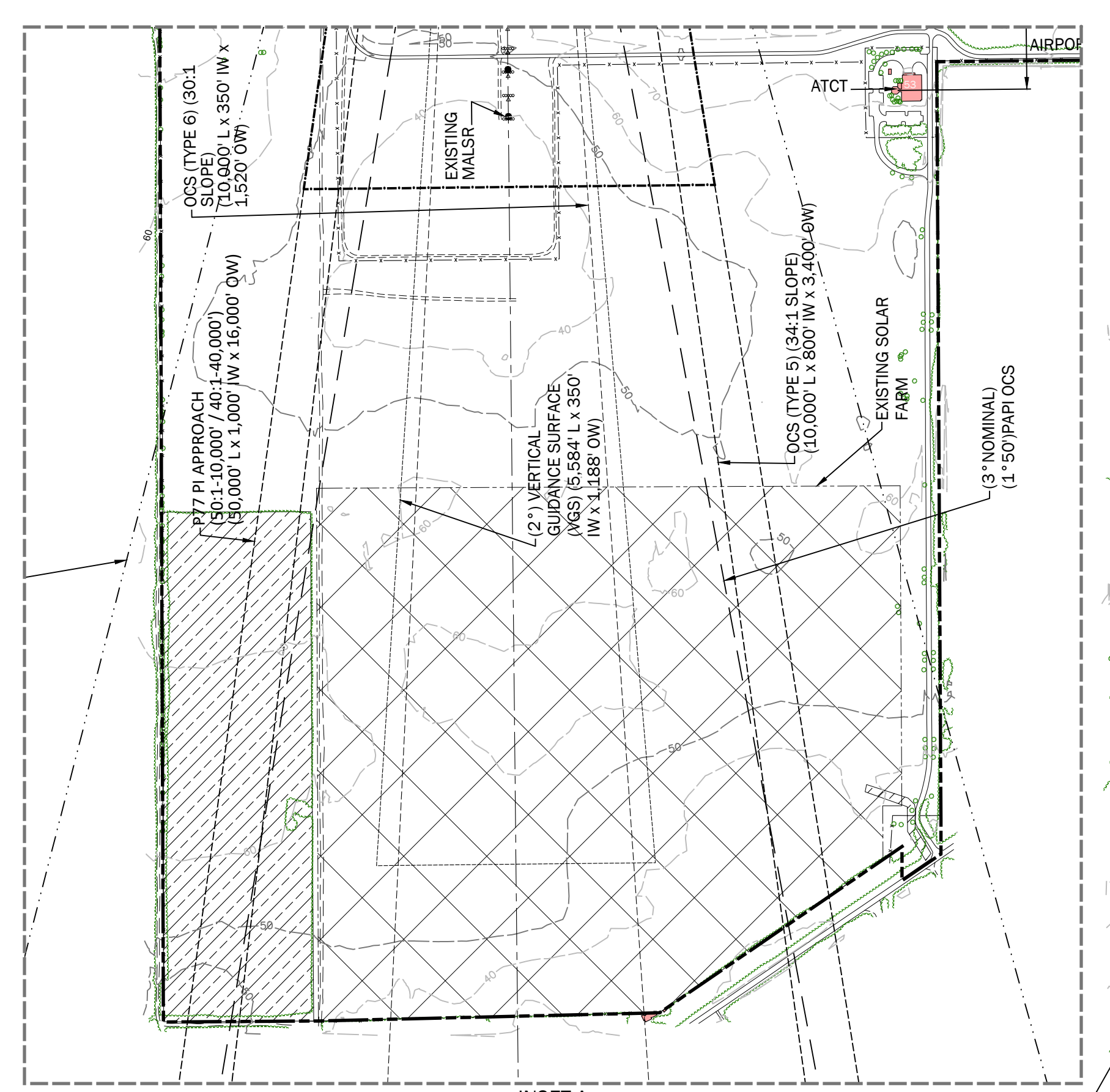
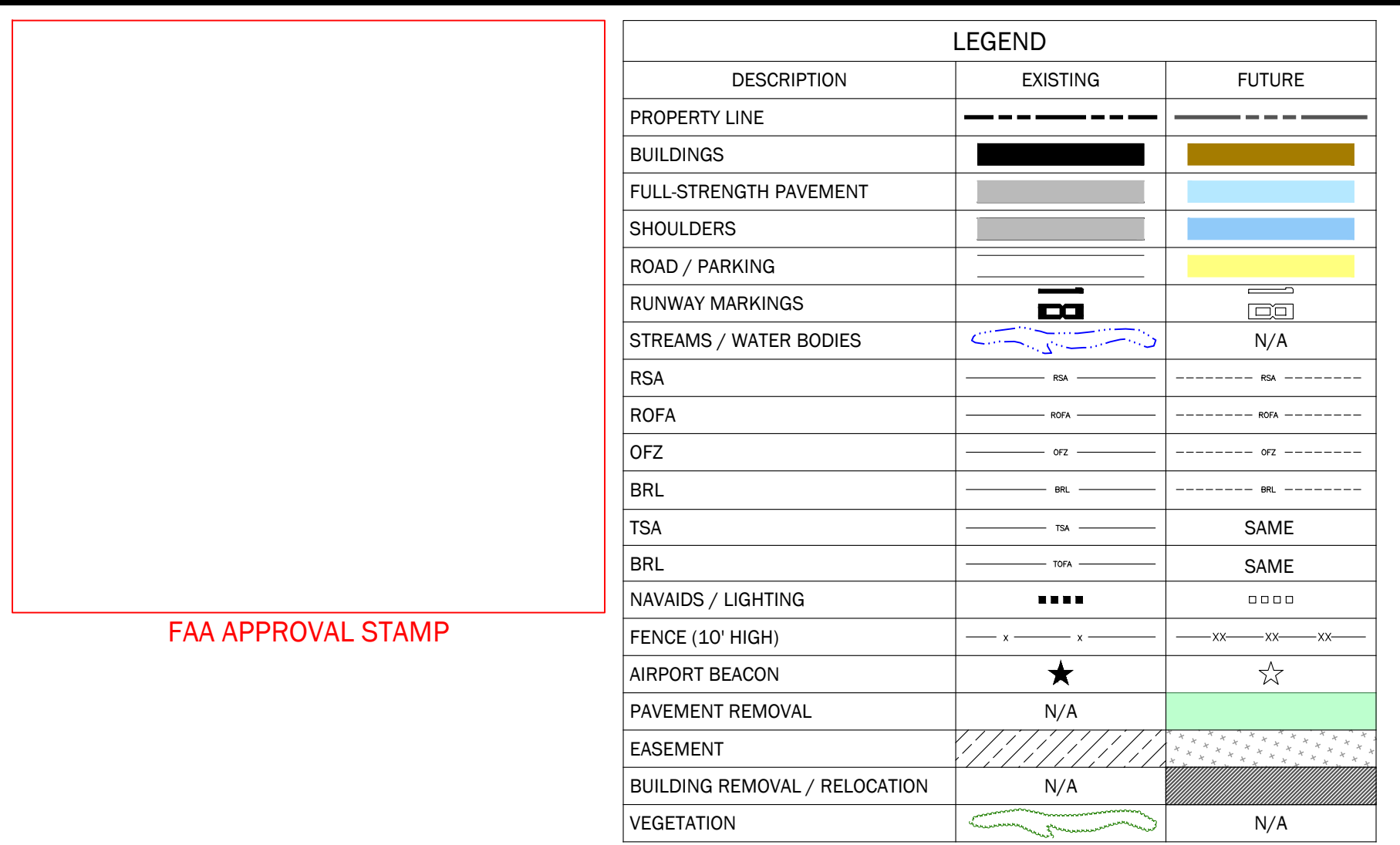
CONDITIONALLY APPROVED
Federal Aviation Administration

This approval is subject to review as conditions change and is subject to the limitations contained in our letter

dated 6/27/2023

Orlando Airports District Office (ORL-ADO)

Refer to FAA Conditional Approval Letter for additional provisions and comments.



RUNWAY 36 END TRAVERSE WAY TABLE

ID	DESCRIPTION	OBJECT TOP ELEVATION (MSL)	ALLOWABLE SURFACE ELEVATION (MSL)	PENETRATION	DISPOSITION
T18	PRIVATE ROAD	63.1	61.3	1.8'	NONE
T19	PRIVATE ROAD	56.6	61.1	-4.9'	NONE
T20	PRIVATE ROAD	67.0	79.7	-12.7'	NONE
T21	PRIVATE ROAD	61.8	65.2	-3.4'	NONE
T22	PRIVATE ROAD	86.8	95.2	-8.4'	NONE

TAXIWAY / TAXILANE DATA TABLE

TAXIWAY	EXISTING		FUTURE	
	EXISTING	FUTURE	EXISTING	FUTURE
TAXIWAY EDGE SAFETY MARGIN (TESM)	15'	10'	15'	10'
TAXIWAY SHOULDER WIDTH	30'	20'	30'	20'
TAXIWAY WIDTH	VARIABLES	50'	VARIABLES	50'
TAXIWAY OFA	250'	SAME	250'	SAME
TAXIWAY TSA	171'	SAME	171'	SAME
TAXIWAY SEPARATION				
TAXIWAY CENTERLINE TO PARALLEL TAXIWAY CENTERLINE	215'	SAME	215'	SAME
TAXIWAY CENTERLINE TO FIXED OR MOVABLE OBJECT	129.5'	SAME	129.5'	SAME
TAXILANE OFA	225'	SAME	225'	SAME
TAXILANE TSA	171'	SAME	171'	SAME
TAXILANE CENTERLINE TO PARALLEL TAXILANE CENTERLINE	198'	SAME	198'	SAME
TAXILANE CENTERLINE TO FIXED OR MOVABLE OBJECT	112.2'	SAME	112.2'	SAME

H:\NCEVILLE-PROJECTS\030-TALLHASSEE INTL\2022\0301.01-PA4 UPDATE_AIP_SE1_000_000\22003001_LAYOUT PLAN.DWG 2/1/2023 3:56 PM